

**Quote Routing Interface (QRI) for Equity**  
**Technical Specifications**  
**Version 2.1.3**



Indonesia Stock Exchange

member of  **WORLD FEDERATION  
OF EXCHANGES**

Indonesia Stock Exchange Building  
Jl. Sudirman Kav 52-53  
Jakarta 12190  
INDONESIA

Phone: +62-21-5150515  
Fax: +62-21-5150430

## Update Summary

| NO. | VERSION             | DATE                          | CHANGE   |
|-----|---------------------|-------------------------------|--|
| 1   | 1.91 (Beta Version) | 18 <sup>th</sup> July 2008    | Updated to X-stream engine interface   |
| 2   | 1.92                | 4 <sup>th</sup> December 2008 | Updated some tag and its value   |
| 3   | 1.94                | 31 <sup>st</sup> March 2011   | <p>Updated Comments and Valid value for tag 376 (Trading ID)</p> <p>Updated valid value for tag 58 Neg. List Message</p> <p>Updated some tag and its value</p> <p>Add new message specification</p> <p>Delete message that is not currently use</p>  |
| 4   | 2.0                 | 7 <sup>th</sup> November 2011 | <p>Add comment for tag 6002 (CurrentPassword) in Logon Request message</p> <p>Add tag 6090 (LogonReply) and tag 6091 (LogonDesc) in Logon Message</p> <p>Make length field for tag 55 ( Symbol) consistent for all messages</p> <p>Add tag 11 (BrokerRef) in value tag 6065 (RefErrorCode) for all MessageType U7</p> <p>Change comment for tag 6021 (PreviousDate) and tag 6022 (PreviousPrice) in Securities Message</p> <p>Add tag 6071 (Remarks2) and tag 6070 (DelistingDate) for Securities message</p> <p>Add new valid value for Pre Closing and Post Closing for tag 326 (SecurityTradingStatus) for Securities message</p> <p>Change JONES time to JATS time for tag 17 (ExecID)</p> <p>Add Appendix C List field type</p> |
| 5   | 2.1.0               | 18 <sup>th</sup> October 2017 | <ul style="list-style-type: none"> <li>• Change valid value for tag 6090</li> <li>• Add tag 172 to Negotiation Deal List Message</li> <li>• Add valid value price stabilization for tag 54 (Side) in Order List Message</li> <li>• Add Price Stabilization and Margin value for tag 54 (side) in Order List message and Trade List message</li> <li>• Remove Market order value in tag 40 for order list message</li> </ul>  |

|   |       |                               |  |
|---|-------|-------------------------------|--|
| 6 | 2.1.1 | 2 <sup>nd</sup> November 2020 | <ul style="list-style-type: none"> <li>a. Change trading hours</li> <li>b. Added comment on tag 37 (OrderID) "The orderID will be reset at the start of each trading day."</li> <li>c. Added comment on tag 198 (SecondaryOrderID) "The Trade Number will be reset at the start of each trading day."</li> </ul>   |
| 7 | 2.1.2 | 19 <sup>th</sup> April 2021   | <p>Added possible value for tag 6010:</p> <ul style="list-style-type: none"> <li>- ACCEL</li> <li>- WATCHLIST</li> </ul>   |
| 8 | 2.1.3 | 20 <sup>th</sup> April 2021   | <ul style="list-style-type: none"> <li>a. Order List<br/>Added new list of value to tag 59 (Time in force)</li> <li>b. Trade List <ul style="list-style-type: none"> <li>• Move Group tag 382-No of Contra Brokers</li> <li>• Added notes future value on tag 337 (Contra Trader) and Tag 375 (Contra Broker) and cpdomicile on Tag 58 (Text)</li> </ul> </li> <li>c. Advertising Message<br/>Added notes future value on tag 1 (Account)</li> </ul> |

# Table of Content

|  |           |
|--|-----------|
| <b>Update Summary</b>  | <b>2</b>  |
| <b>Table of Content</b>  | <b>4</b>  |
| <b>Introduction</b>  | <b>5</b>  |
| <b>I. Information Exchange Protocol Concept</b>                  | <b>5</b>  |
| <b>II. QRI Header</b>  | <b>6</b>  |
| <b>III. Administrative Messages</b>                              | <b>7</b>  |
| 1. LOGON   | 7         |
| • Logon Request  | 7         |
| • Logon Reply OK1  | 8         |
| • Logon Reply OK2  | 8         |
| • Logon Reply BAD  | 8         |
| 2. Logout  | 8         |
| • Logout Request   | 9         |
| • Logout Reply OK  | 9         |
| 3. Change Password   | 9         |
| • Change Password Request  | 10        |
| • Change Password Reply OK                                       | 10        |
| • Change Password Reply BAD                                      | 10        |
| <b>IV. Application Messages</b>                                  | <b>11</b> |
| 4. Order List Subscription (Subscribe or Unsubscribe)            | 11        |
| 5. Order List Message  | 12        |
| 6. Trade List Subscription (Subscribe or Unsubscribe)            | 15        |
| 7. Trade List Message  | 15        |
| 8. Negotiation Deal List Subscription (Subscribe or Unsubscribe) | 18        |
| 9. Negotiation Deal List Message                                 | 18        |
| 10. Securities Subscription (Subscribe or Unsubscribe)           | 20        |
| 11. Securities Message   | 21        |
| 12. Trading Limit Subscription (Subscribe or Unsubscribe)        | 23        |
| 13. Trading Limit Message  | 23        |
| 14. Security Attribute Subscription (Subscribe or Unsubscribe)   | 24        |
| 15. Security Attribute Message                                   | 24        |
| 16. Advertising Subscription (Subscribe or Unsubscribe)          | 25        |
| 17. Advertising Message  | 26        |
| 18. News Message   | 28        |
| 19. Trading Info Reply Message                                   | 28        |
| 20. Possible Duplicate Fix Message                               | 28        |
| 21. Unknown JONEC Message  | 29        |
| 22. JONEC Message Interpretation Error                           | 29        |
| 23. Broadcast Table Full   | 29        |
| 24. JATS Interpretation Error Reply Message                      | 30        |
| 25. Empty Security List  | 30        |
| 26. Failed to send Heartbeat to JATS                             | 30        |
| 27. Market Info Reply Ok Message                                 | 31        |
| 28. Market Info Reply Bad Message                                | 31        |
| <b>V. Message Trailer</b>  | <b>31</b> |
| <b>Appendix A</b>  | <b>33</b> |
| Example of Messages  | 33        |
| <b>Appendix B</b>  | <b>34</b> |
| FIX Documentations   | 34        |
| <b>Appendix C</b>  | <b>35</b> |
| List Field Type  | 35        |

## Introduction

The IDX Brokerage Server Service provides a service of receiving data, which are transactions to be transmitted from brokerage server to the IDX computer. The main purpose of the data transmission is to send automated order messages. The messages must comply to a certain specification of stock exchange information exchange protocol. This document is intended to be the specification.

The data transmission service is available every market day on trading session. On Monday until Thursday the morning trading session starts at 09:00 and ends at 11:30. The afternoon trading session starts at 13:30 and ends at 15:00. On Friday morning trading session starts at 09:00 and ends at 11:30, afternoon trading session starts at 13:30 and ends at 15:00.

## I. Information Exchange Protocol Concept

This concept is developed to facilitate the electronic exchange of information related to securities transactions. It is basically adopted from the FIX (Financial Information Exchange) protocol version 4.2, and used partially for IDX purposes. It is used to communicate between exchange's trading engine and broker's brokerage information system engine. To support compatibility, TCP/IP protocol layer is used as transport protocol. Any physical medium that supports TCP/IP can be used to deliver information.

General format for each message:

|               |             |                |
|---------------|-------------|----------------|
| <b>Header</b> | <b>DATA</b> | <b>Trailer</b> |
|---------------|-------------|----------------|

The general format of a FIX message is a standard header followed by the message body fields and terminated with a standard trailer. Each message is constructed of a stream of <tag>=<value> fields. Each item/field/column in the message is separated by character ASCII <SOH> (001).

Examples of the messages in their full-length format can be seen at the Appendix A of this document.

Data types are mapped to ASCII strings as follows:

- int: Sequence of digits without commas or decimals and optional sign character (ASCII characters "-" and "0" - "9"). The sign character utilizes one byte (i.e. positive int is "99999" while negative int is "-99999").  
Examples: 723 in field 21 would be mapped int as **|21=723|**.  
-723 in field 12 would be mapped int as **|12=-723|**
- float: Sequence of digits with optional decimal point and sign character (ASCII characters "-", "0" - "9" and "."); the absence of the decimal point within the string will be interpreted as the float representation of an integer value. All float fields must accommodate up to fifteen significant digits.
- char: Alpha-numeric free format strings, can include any character or punctuation except the delimiter. All char fields are case sensitive (i.e. **jakarta** is not the same with **Jakarta**).
- time: Time/date combination in YYYYMMDD-HH:MM:SS format, colons and dash required. Valid values: YYYY = 0000-9999, MM = 01-12, DD = 01-31, HH = 00-23, MM = 00-59, SS = 00-59.
- date: Date in YYYYMMDD format. Valid values: YYYY = 0000-9999, MM = 01-12, DD = 01-31.

The protocol assumes complete ordered delivery of messages between parties. Implementers should consider this when designing message gap fill processes. Two options exist for dealing with gaps, either request all messages subsequent to the last message received or ask for the specific message missed while maintaining an ordered list of all newer messages. For example, if the receiver misses the second of five messages, the application could ignore messages 3 through 5 and generate a resend request for messages 2 through 5. Another option would involve saving messages 3 through 5 and resending only message 2. In both cases, messages 3 through 5 should not be processed before message 2.

The protocol is based on an optimistic model; normal delivery of data is assumed (i.e. no acknowledgment of individual messages) with errors in delivery identified by message sequence number gaps. Each message is identified by a unique sequence number. It is the receiving application's responsibility to monitor incoming sequence numbers to identify message gaps for response with resend request messages.

The protocol does not support individual message acknowledgment. However, a number of application messages require explicit application level acceptance or rejection. Orders, cancel requests, cancel/replace requests and allocation require specific application level response, execution reports can be rejected with the DK message but do not require explicit acceptance.

## II. QRI Header

| Tag | Field Name       | Comments  | Valid Value                               |
|-----|------------------|---|---|
| 8   | BeginString      | FIX.4.2 (Always unencrypted, must be first field in message)  | FIX.4.2-JSX                               |
| 9   | BodyLength       | (Always unencrypted, must be second field in message)   | Calculated by system                      |
| 35  | MsgType          | (Always unencrypted, must be third field in message)  | Depend on Msg to be sent.                 |
| 49  | SenderCompID     | (Always unencrypted)  | Sender FIX Engine ID (FIX Engine Setup)   |
| 56  | TargetCompID     | (Always unencrypted)  | Receiver FIX Engine ID (FIX Engine Setup) |
| 34  | MsgSeqNum        | (Can be embedded within encrypted data section.)  | FIX Engine supplied.                      |
| 50  | SenderSubID      | (Can be embedded within encrypted data section.)  | Reserved                                  |
| 142 | SenderLocationID | Sender's LocationID (i.e. geographic location and/or desk) (Can be embedded within encrypted data section.) | Trader IP Address supplied by Broker.     |
| 52  | SendingTime      | (Can be embedded within encrypted data section.)  | Timestamp from FIX Engine                 |

### III. Administrative Messages

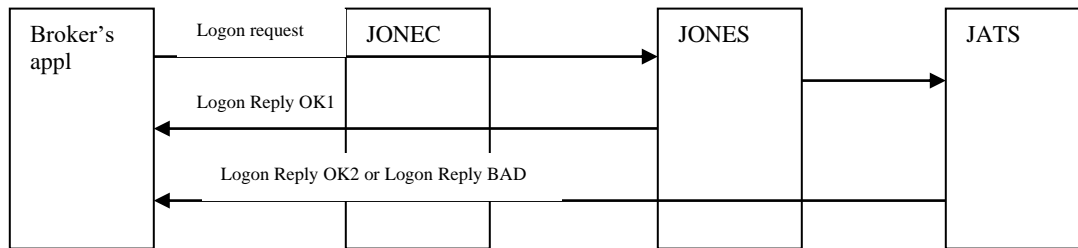
#### 1. LOGON

Logon process flow as follow:

- 1) Broker's application sends Logon Request message to JONEC (see Logon Request's table below).
- 2) Broker's application will receive Logon Reply OK1 message from JONES via JONEC (see Logon Reply OK1's table below)
- 3) Broker's application will receive second message from JATS via JONES and JONEC with condition as follow:
  - a) If logon is succesfull, broker's application will receive Logon Reply OK2 message (see Logon Reply OK2's table below).
  - b) If logon is rejected, broker's application will receive Logon Reply BAD message (see Logon Reply BAD's table below).
- 4) Session will be disconnected.

Summary:

- Logon Reply OK will consist of two Logon messages (MsgType=A).
- Logon Reply Bad change from MsgType=A to MsgType=5.



Messages structures are as follow:

- **Logon Request**

| Tag  | Field Name       | Comments  | Valid Value        | Type           |
|------|------------------|---|--------------------|----------------|
|      | Standard Header  | MsgType = A (Logon)   |                    |                |
| 98   | EncryptMethod    | No encryption   | 0                  | See Appendix C |
| 108  | HeartBtInt       | FIX Engine setup (seconds)<br>Supplied by broker  | 45                 |                |
| 6001 | UserID           | ID The User logged onto the JATS  | User ID            |                |
| 6002 | CurrentPassword  | The User Current password.<br><br>Password must meet complexity requirements. Minimum password length is 8. Must be combination of alphanumeric characters. | Supplied by broker |                |
|      | Standard Trailer |   |                    |                |

- **Logon Reply OK1**

| Tag | Field Name       | Comments                   | Valid Value | Type           |
|-----|------------------|----------------------------|-------------|----------------|
|     | Standard Header  | MsgType = A (Logon)        |             |                |
| 98  | EncryptMethod    | No encryption              | 0           | See Appendix C |
| 108 | HeartBtInt       | FIX Engine setup (seconds) | 45          |                |
|     | Standard Trailer |                            |             |                |

- **Logon Reply OK2**

| Tag  | Field Name       | Comments                         | Valid Value  | Type           |
|------|------------------|----------------------------------|--|----------------|
|      | Standard Header  | MsgType = A (Logon)              |  |                |
| 98   | EncryptMethod    | No encryption                    | 0  | See Appendix C |
| 108  | HeartBtInt       | FIX Engine setup (seconds)       | 45   |                |
| 6001 | UserID           | ID The User logged onto the JATS | NO   |                |
| 6090 | LogonReply       | Is required to change Password   | 1 = Do not need to change password<br>2 = Current password expires in n day(s)<br>or<br>Password-change-required (should change password before order entry)<br>3 = password expired.<br>Password change required for user. user must change password first, if user doesn't change password, user will be forced logout.<br><br><i>Password must meet complexity requirements. Minimum password length is 8. Must be combination of alphanumeric characters</i> |                |
| 6091 | LogonDesc        | Logon Description                | JATS Message   |                |
|      | Standard Trailer |                                  |  |                |

- **Logon Reply BAD**

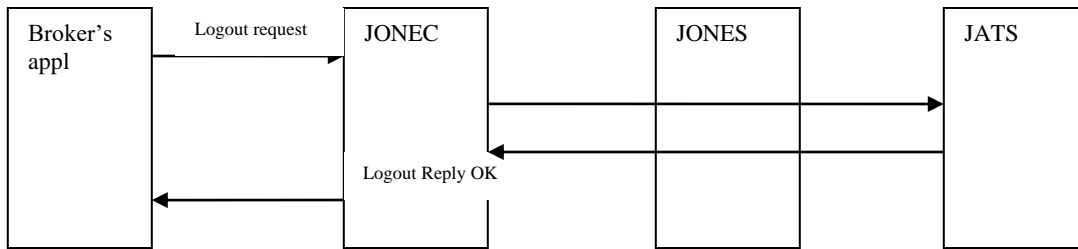
| Tag | Field Name       | Comments             | Valid Value   | Type           |
|-----|------------------|----------------------|---------------|----------------|
|     | Standard Header  | MsgType = 5 (Logout) |               |                |
| 58  | Text             | Error message        | Error message | See Appendix C |
|     | Standard Trailer |                      |               |                |

## 2. Logout

Logout Process as follow:

- 1) Broker's application sends Logout request message to JONEC (see Logout Request below). Msg Type = 5, with field Text=Userid.
- 2) Broker's application receives Logout Reply OK from JONES (see Logout Reply OK below). MsgType=5 with field Text="Confirm Logout". And session disconnected.





**Note:**

- Logout Reply Bad is not required.

- **Logout Request**

| Tag | Field Name       | Comments                             | Valid Value | Type           |
|-----|------------------|--------------------------------------|-------------|----------------|
|     | Standard Header  | MsgType = 5 (Logout)                 |             |                |
| 58  | Text             | UserID the User logged onto the JATS | <userid>    | See Appendix C |
|     | Standard Trailer |                                      |             |                |

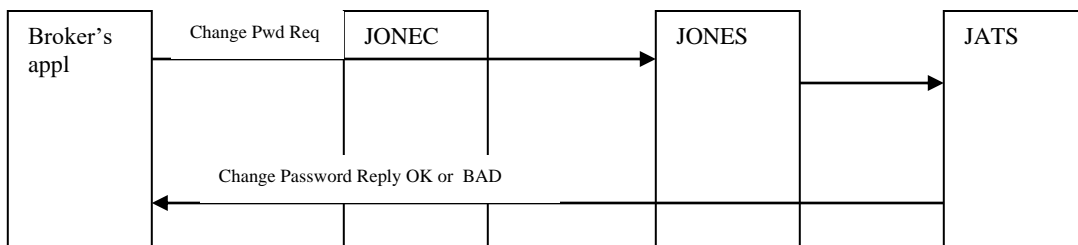
- **Logout Reply OK**

| Tag | Field Name       | Comments             | Valid Value         | Type           |
|-----|------------------|----------------------|---------------------|----------------|
|     | Standard Header  | MsgType = 5 (Logout) |                     |                |
| 58  | Text             | Return message       | "confirming logout" | See Appendix C |
|     | Standard Trailer |                      |                     |                |

### 3. Change Password

Process flow as follow:

- 1) Broker's application sends Change Password Request to JONEC (see Change Password Request's table below)
- 2) Broker's application receives Change Password Reply OK or Change Password Reply BAD (see Change Password Reply OK's or Change Password Reply BAD's table below)



- **Change Password Request**

| <i>Tag</i> | <i>Field Name</i>       | <i>Comments</i>                         | <i>Valid Value</i> | <i>Type</i>    |
|------------|-------------------------|---|--------------------|----------------|
|            | <i>Standard Header</i>  | MsgType = U1                            |                    |                |
| 6001       | UserID                  | <i>ID The User logged onto the JATS</i> | User ID            | See Appendix C |
| 6002       | Current Password        | <i>The User Current password</i>        |                    |                |
| 6003       | New Password            | <i>The User New password</i>            |                    |                |
| 6004       | Return Value            | " "                                     | " " (Single Space) |                |
|            | <i>Standard Trailer</i> |   |                    |                |

- **Change Password Reply OK**

| <i>Tag</i> | <i>Field Name</i>       | <i>Comments</i>                         | <i>Valid Value</i>                   | <i>Type</i>    |
|------------|-------------------------|---|--------------------------------------|----------------|
|            | <i>Standard Header</i>  | MsgType = U1<br>(Change Password)       |                                      |                |
| 6001       | UserID                  | <i>ID The User logged onto the JATS</i> | " " (Single Space)                   | See Appendix C |
| 6002       | Current Password        | <i>The User Current password</i>        | " " (Single Space)                   |                |
| 6003       | New Password            | <i>The User New password</i>            | " " (Single Space)                   |                |
| 6004       | Return Value            | Text                                    | "User password successfully changed" |                |
|            | <i>Standard Trailer</i> |   |                                      |                |

- **Change Password Reply BAD**

| <i>Tag</i> | <i>Field Name</i>       | <i>Comments</i>                         | <i>Valid Value</i> | <i>Type</i>    |
|------------|-------------------------|---|--------------------|----------------|
|            | <i>Standard Header</i>  | MsgType = U1                            |                    |                |
| 6001       | UserID                  | <i>ID The User logged onto the JATS</i> | " " (Single Space) | See Appendix C |
| 6002       | Current Password        | <i>The User Current password</i>        | " " (Single Space) |                |
| 6003       | New Password            | <i>The User New password</i>            | " " (Single Space) |                |
| 6004       | Return Value            | Text Error message                      |                    |                |
|            | <i>Standard Trailer</i> |   |                    |                |

## IV. Application Messages

### 4. Order List Subscription (Subscribe or Unsubscribe)

| Tag  | Field Name       | Comments   | Valid Value                    | Type           |
|------|------------------|--|--------------------------------|----------------|
|      | Standard Header  | MsgType = U2   |                                |                |
| 6001 | USERID           | ID The User logged onto the JATS   | User ID                        | See Appendix C |
| 6050 | REQTYPE          | Subscription type :<br><b>O=Order Subscript</b><br>T=Trade Subscript<br>N=Neg Subscript<br>L=Limit Subscript<br>E=Sec Subscript<br>C=Sec Attribute Subscript<br>B= Advertising Subscript | <u>O</u><br>Supplied by broker |                |
| 6051 | SEQNUM           | Sequence number  | 0                              |                |
| 6052 | LAST             | Required if REQTYPE = O<br>Required if REQTYPE = T<br>Required if REQTYPE = N  | 0                              |                |
|      | Standard Trailer |  |                                |                |

## 5. Order List Message

| Tag | Field Name      | Comments  | Valid Value   | Type           |
|-----|-----------------|---|---|----------------|
|     | Standard Header | MsgType = 8<br>(Execution Report)   |   |                |
| 37  | OrderID         | OrderID is required to be unique for each chain of orders.<br>The orderID will be reset at the start of each trading day  | Jats Order number   | See Appendix C |
| 11  | ClOrdID         | Required for executions against electronically submitted orders which were assigned an ID by the institution. Not required for orders manually entered by the broker.   | Broker Reference  |                |
| 21  | HandInst        | Instructions for order handling on Broker trading floor   | =1 for normal order   |                |
| 41  | OrigClOrdID     | Conditionally required for response to an electronic Cancel or Cancel/Replace request (ExecType=PendingCancel, Replaced, or Canceled). ClOrdID of the previous order (NOT the initial order of the day) when canceling or replacing an order. | Original JATS number / linked order   |                |
| 109 | ClientID        | Used for firm identification in third-party transactions (should not be a substitute for OnBehalfOfCompID/DeliverToCompID).   | User ID   |                |
| 76  | ExecBroker      | Used for firm identification in third-party transactions (should not be a substitute for OnBehalfOfCompID/DeliverToCompID).   | ExecBrokerID  |                |
| 17  | ExecID          | Must be unique for each Execution Report message  | JATS time stamp (hhmmsszzz)<br>Zzz= millisecond   |                |
| 20  | ExecTransType   | =3 (Status)   | =3 (Status)   |                |
| 150 | ExecType        | Describes the type of execution report. Same possible values as OrdStatus.  | See order request table   |                |
| 39  | OrdStatus       | Describes the current state of a CHAIN of orders, same scope as OrderQty, CumQty, LeavesQty, and AvgPx  | 2 – matched order (M)<br>4 – cancelled order (W)<br>0 – open order (O)<br>5 – amended order (A) |                |
| 1   | Account         | Required for executions against electronically submitted orders which were assigned an account by the institution   | See order request table   |                |

| Tag | Field Name       | Comments   | Valid Value   | Type           |
|-----|------------------|--|---|----------------|
| 64  | FutSettDate      | Required when <i>SettlmntTyp</i> = 6 (Future) or <i>SettlmntTyp</i> = 8 (Sellers Option)   | Settledate  |                |
| 55  | Symbol           | Set to single Space  | “ ”   |                |
| 65  | SymbolSfx        | ORG  | ORG   |                |
| 48  | SecurityID       | Sec req  | Sec req   |                |
| 54  | Side             | Side of order  | 1 = Buy<br>2 = Sell<br>5 = Sell short<br>M = Margin<br>P = Price Stabilization  |                |
| 38  | OrderQty         | Either <i>CashOrderQty</i> or <i>OrderQty</i> is required. Not required for a rejected cash order or an order ack for a cash order.  | Order qty<br><br>Order quantity in LOT<br>Advertisement quantity in share   |                |
| 40  | OrdType          | 1 – Market Order<br>7 – Limit or Better  | 1 – Market Order or<br>7 – Limit or Better  |                |
| 44  | Price            | Required if specified on the order   | Price   |                |
| 59  | TimeInForce      | Absence of this field indicates Day order  | 0 – Day order<br>3- IOC<br>4- FOK<br>S – Session order  |                |
| 432 | ExpireDate       | Conditionally required if <i>TimeInForce</i> = GTD and <i>ExpireTime</i> is not specified.   | Expire Date   |                |
| 18  | ExecInst         | Can contain multiple instructions, space delimited.  |   | See Appendix C |
| 151 | LeavesQty        | Amount of shares open for further execution. If the <i>OrdStatus</i> is Canceled, DoneForTheDay, Expired, Calculated, or Rejected (in which case the order is no longer active) then <i>LeavesQty</i> could be 0, otherwise <i>LeavesQty</i> = <i>OrderQty</i> - <i>CumQty</i> . |   |                |
| 14  | CumQty           | Currently executed shares for chain of orders.   | 0   |                |
| 6   | AvgPx            | Not Applicable   | 0   |                |
| 75  | TradeDate        | Used when reporting other than current day trades.   | Matching time stamp   |                |
| 60  | TransactTime     | Time the transaction represented by this <i>ExecutionReport</i> occurred   |   |                |
| 58  | Text             |  |   |                |
| 440 | ClearingAccount  |  |   |                |
| 376 | ComplianceID     | ID used to represent this transaction for compliance Trading-ID purposes   | Trading-ID contains 6 digit alpha numeric of SID (from 8th digit to 13th digit). SID is provided by Indonesian Central Securities Depository (KSEI) |                |
|     | Standard Trailer |  |   |                |



## 6. Trade List Subscription (Subscribe or Unsubscribe)

| Tag  | Field Name       | Comments   | Valid Value                    | Type           |
|------|------------------|--|--------------------------------|----------------|
|      | Standard Header  | MsgType = U2   |                                |                |
| 6001 | USERID           | ID The User logged onto the JATS   | User ID                        | See Appendix C |
| 6050 | REQTYPE          | Subscription type :<br>O=Order Subscript<br><b>T=Trade Subscript</b><br>N=Neg Subscript<br>L=Limit Subscript<br>E=Sec Subscript<br>C=Sec Attribute Subscript<br>B= Advertising Subscript | <u>T</u><br>Supplied by broker |                |
| 6051 | SEQNUM           | JATS Sequence number   | 0                              |                |
| 6052 | LAST             | Required if ReqType = O<br>Required if ReqType = T<br>Required if ReqType = N  | 0                              |                |
| 54   | Side             | Required if ReqType = T  | 1                              |                |
|      | Standard Trailer |  |                                |                |

## 7. Trade List Message

| Tag | Field Name       | Comments   | Valid Value  | Type           |
|-----|------------------|--|--|----------------|
|     | Standard Header  | MsgType = 8<br>(Execution Report)  |  |                |
| 17  | ExecID           | Must be unique for each Execution Report message   | JATS time stamp (hhmmsszzz)<br>Zzz= milisecond                                 | See Appendix C |
| 198 | SecondaryOrderID | The Trade number will be reset at the start of each trading day  | Trade number   |                |
| 37  | OrderID          | OrderID is required to be unique for each chain of orders.<br>The orderID will be reset at the start of each trading day | Jats Order number  |                |
| 60  | TransactTime     | Time the transaction represented by this ExecutionReport occurred  | Tradetime  |                |
| 168 | EffectiveTime    | Time specified on the order at which the order should be considered valid  | JATS Order date + JATS Order time  |                |
| 54  | Side             | Side of trade  | 1 = Buy<br>2 = Sell<br>5 = Sell short<br>M = Margin<br>P = Price Stabilization |                |

| Tag | Field Name             | Comments  | Valid Value   | Type  |
|-----|------------------------|---|---|---|
| 11  | ClOrdID                | Required for executions against electronically submitted orders which were assigned an ID by the institution. Not required for orders manually entered by the broker. | Broker Reference  |   |
| 109 | ClientID               | Used for firm identification in third-party transactions (should not be a substitute for OnBehalfOfCompID/DeliverToCompID).   | User ID   |   |
| 76  | ExecBroker             | Used for firm identification in third-party transactions (should not be a substitute for OnBehalfOfCompID/DeliverToCompID).   | Broker ID   |   |
| 382 | <b>NoContraBrokers</b> | Number of ContraBrokers repeating group instances.  | 1   |   |
| →   | <b>337</b>             | <b>ContraTrader</b>   |   | Counterpart userid – will be set to "--"    |
| →   | <b>375</b>             | <b>ContraBroker</b>   | First field in repeating group. Required if NoContraBrokers > 0.  | Counterpart broker ID – will be set to "--" |
| 1   | Account                | Required for executions against electronically submitted orders which were assigned an account by the institution   | I or<br>A or<br>S or<br>F   | See Appendix C                              |
| 55  | Symbol                 |   | Symbol  |   |
| 65  | SymbolSfx              |   | See order request table Symbolsfx   |   |
| 48  | SecurityID             |   | Sec Req   |   |
| 44  | Price                  | Required if specified on the order  | Price   |   |
| 14  | CumQty                 | Currently executed shares for chain of orders.  | Matched qty   |   |
| 58  | Text                   |   | Value traded N[16]+<br>Accruedint N[16](future use) +<br>domicile Char[1](future use)+<br>cpdomicile Char[1] (future use) – will be set to "--" |   |
| 440 | ClearingAccount        | Set to " " (single space)   |   |   |
| 64  | FutSettDate            | Required when SettlmntTyp = 6 (Future) or SettlmntTyp = 8 (Sellers Option)  | Settlement date   |   |



| Tag | Field Name       | Comments  | Valid Value  | Type           |
|-----|------------------|---|--|----------------|
| 150 | ExecType         | <p>Describes the type of execution report. Same possible values as OrdStatus.</p> <p>Valid value:<br/> 2 = normal match<br/> 6 = pending cancel<br/> 4 = cancelled = withdrawn<br/> R = crossed</p>   | 2 or<br>6 or<br>4 or<br>R  |                |
| 31  | LastPx           | <p>Price of this (last) fill. Not required for ExecTransType = 3 (Status), Should represent the "all-in" (LastSpotRate + LastForwardPoints) rate for F/X orders. ). When required, should be "0" for non-fills ("fill" defined as ExecTransType=New and ExecType=Partial Fill or Fill) unless noted below. If ExecType=Stopped, represents the price stopped/guaranteed/protected at.</p> | Regular board price  | See Appendix C |
| 20  | ExecTransType    | =3 (Status)   | 3  |                |
| 39  | OrdStatus        | <p>Describes the current state of a CHAIN of orders, same scope as OrderQty, CumQty, LeavesQty, and AvgPx</p> <p>Valid value:<br/> 2 = normal match<br/> 6 = pending cancel<br/> 4 = cancelled = withdrawn<br/> R = crossed</p>   | 2 or<br>6 or<br>4 or<br>R  |                |
| 151 | LeavesQty        | <p>Amount of shares open for further execution. If the OrdStatus is Canceled, DoneForTheDay, Expired, Calculated, or Rejected (in which case the order is no longer active) then LeavesQty could be 0, otherwise LeavesQty = OrderQty - CumQty.</p>   | 0  |                |
| 6   | AvgPx            | Not Applicable  | 0  |                |
| 376 | ComplianceID     | <p>ID used to represent this transaction for compliance Trading-ID purposes</p>   | <p>Trading-ID contains 6 digit alpha numeric of SID (from 8th digit to 13th digit). SID is provided by Indonesian Central Securities Depository (KSEI)</p> |                |
|     | Standard Trailer |   |  |                |

## 8. Negotiation Deal List Subscription (Subscribe or Unsubscribe)

| Tag  | Field Name       | Comments   | Valid Value                 | Type           |
|------|------------------|--|-----------------------------|----------------|
|      | Standard Header  | MsgType = U2   |                             |                |
| 6001 | USERID           | ID The User logged onto the JATS   | User ID                     | See Appendix C |
| 6050 | REQTYPE          | Subscription Type :<br>O=Order Subscript<br>T=Trade Subscript<br><b>N=Neg Subscript</b><br>L=Limit Subscript<br>E=Sec Subscript<br>C=Sec Attribute Subscript<br>B= Advertising Subscript | N<br><br>Supplied by broker |                |
| 6051 | SEQNUM           |  | 0                           |                |
| 6052 | LAST             | Required if REQTYPE = O<br>Required if REQTYPE = T<br>Required if REQTYPE = N  | 0                           |                |
|      | Standard Trailer |  |                             |                |

## 9. Negotiation Deal List Message

| Tag | Field Name      | Comments  | Valid Value  | Type           |                       |
|-----|-----------------|---|--|----------------|-----------------------|
|     | Standard Header | MsgType = 8<br>(Execution Report)   |  |                |                       |
| 37  | OrderID         | OrderID is required to be unique for each chain of orders.  | JATS deal number   | See Appendix C |                       |
| 11  | ClOrdID         | Required for executions against electronically submitted orders which were assigned an ID by the institution. Not required for orders manually entered by the broker. | Broker Reference   |                |                       |
| 109 | ClientID        | Used for firm identification in third-party transactions (should not be a substitute for OnBehalfOfCompID/DeliverToCompID).   | User ID  |                |                       |
| 76  | ExecBroker      | Used for firm identification in third-party transactions (should not be a substitute for OnBehalfOfCompID/DeliverToCompID).   | Broker ID  |                |                       |
| 382 | NoContraBrokers | Number of ContraBrokers repeating group instances.  | 1  |                |                       |
| →   | 375             | <b>ContraBroker</b>   | First field in repeating group. Required if NoContraBrokers > 0. |                | Counterpart broker ID |
| →   | 337             | <b>ContraTrader</b>   |  |                | Counterpart userID    |

| Tag | Field Name        | Comments  | Valid Value   | Type           |
|-----|-------------------|---|---|----------------|
| 17  | ExecID            | Must be unique for each Execution Report message  | JATS time stamp (hhmmsszzz)<br>Zzz= milisecond  | See Appendix C |
| 20  | ExecTransType     | =3 (Status)   | 3   |                |
| 150 | ExecType          | Describes the type of execution report. It is recommended to use OrdStatus instead of ExecType  | 0 for Unconfirmed deal<br>2 for Matched deal<br>4 for withdrawn deal  |                |
| 39  | OrdStatus         | Describes the current state of a CHAIN of orders, same scope as OrderQty, CumQty, LeavesQty, and AvgPx<br><br>0 (new/not matched)<br>D Confirmed Deal<br>2 (filled/matched)<br>4 (canceled/withdrawn) | 0 for Unconfirmed deal<br>D for Confirmed deal<br>2 for Matched deal<br>4 for withdrawn deal  |                |
| 1   | Account           | Required for executions against electronically submitted orders which were assigned an account by the institution   | I or<br>A or<br>S or<br>F   |                |
| 64  | SettlDate         | Settlement Date   | T+3 (YYYYMMDD)  |                |
| 172 | SettlDeliveryType | Identifies type of settlement   | 0 = 'Versus. Payment': Deliver (if Sell) or Receive (if Buy) vs. (Against) Payment<br>1 = 'Free': Deliver (if Sell) or Receive (if Buy)<br>Free |                |
| 55  | Symbol            |   | Symbol  |                |
| 65  | SymbolSfx         |   | SymbolSfx   |                |
| 48  | SecurityID        |   | Sec Req   |                |
| 54  | Side              | Side of deal or buy/sell<br><br>1=Buy (Counterpart)<br>2=Sell (Initiator)   | 1 or<br>2 or  |                |
| 44  | Price             | Required if specified on the order  | Neg deal price  |                |
| 168 | EffectiveTime     | Time specified on the order at which the order should be considered valid   | Confirm time  |                |

| Tag | Field Name       | Comments   | Valid Value   | Type           |
|-----|------------------|--|---|----------------|
| 31  | LastPx           | Price of this (last) fill. Not required for ExecTransType = 3 (Status), Should represent the "all-in" (LastSpotRate + LastForwardPoints) rate for F/X orders. ). When required, should be "0" for non-fills ("fill" defined as ExecTransType=New and ExecType=Partial Fill or Fill) unless noted below. If ExecType=Stopped, represents the price stopped/guaranteed/protected at. | Regular board price   | See Appendix C |
| 151 | LeavesQty        | Amount of shares open for further execution. If the OrdStatus is Canceled, DoneForTheDay, Expired, Calculated, or Rejected (in which case the order is no longer active) then LeavesQty could be 0, otherwise LeavesQty = OrderQty - CumQty.   | 0   |                |
| 14  | CumQty           | Currently executed shares for chain of orders.   | 0   |                |
| 6   | AvgPx            | Not Applicable   | 0   |                |
| 58  | Text             | Domicile (future use) + Space[1] + Counterpart Trading-ID + space[1]   | Space[1] + Space[1] + Counterpart Trading-ID + space[1]   |                |
| 440 | ClearingAccount  | Set to " " (single space)  | " "   |                |
| 376 | ComplianceID     | ID used to represent this transaction for compliance Trading-ID purposes   | Trading-ID contains 6 digit alpha numeric of SID (from 8th digit to 13th digit). SID is provided by Indonesian Central Securities Depository (KSEI) |                |
| 38  | OrderQty         | Negdeal quantity   | Negdeal quantity  |                |
|     | Standard Trailer |  |   |                |

## 10. Securities Subscription (Subscribe or Unsubscribe)

| Tag  | Field Name      | Comments   | Valid Value                        | Type           |
|------|-----------------|--|------------------------------------|----------------|
|      | Standard Header | MsgType = U2   |                                    |                |
| 6001 | USERID          | ID The User logged onto the JATS   | User ID                            | See Appendix C |
| 6050 | REQTYPE         | Subscription Type :<br>O=Order Subscript<br>T=Trade Subscript<br>N=Neg Subscript<br>L=Limit Subscript<br><b>E=Sec Subscript</b><br>C=Sec Attribute Subscript<br>B= Advertising Subscript | <u>E</u><br><br>Supplied by Broker |                |
| 6051 | SEQNUM          | Sequence number  | 0                                  |                |

|      |                  |  |                             |                |
|------|------------------|--|-----------------------------|----------------|
| 65   | SymbolSfx        | Required if REQTYPE = E<br>Required if REQTYPE = C | See new order request table | See Appendix C |
| 6009 | MARKETCODE       | Required if REQTYPE = E<br>"EQ" for equity market  | EQ                          |                |
|      | Standard Trailer |  |                             |                |

Hint :

**User can only subscribes securites list from one board in the same time. In order to get the securities list from another board, user must unsubscribe the active securities subscription and then subscribe securities list from another board.**

## 11. Securities Message

| Tag  | Field Name            | Comments   | Valid Value  | Type           |
|------|-----------------------|--|--|----------------|
|      | Standard Header       | MsgType = U4<br>( Security Report )  |  |                |
| 6005 | Record Number         | N / A  | 1  | See Appendix C |
| 48   | SecurityID            | See order request table  | See order request table  |                |
| 55   | Symbol                | See order request table  | See order request table  |                |
| 6006 | REMARKS               | Security remarks   | Security remarks   |                |
| 6071 | REMARKS2              | Security remarks2  | Security remarks2  |                |
| 6007 | SHORTNAME             | Security shortname   | Security shortname   |                |
| 6008 | STATUS                | A (active) or S (Suspended)  | A (active) or S (Suspended)  |                |
| 326  | SecurityTradingStatus | N (not available) -> 2 (Trading Halt)<br>O (open price period) -> 14 (ITS Pre-Opening)<br>T (trading normally)-> 17(Ready Trade)<br>C (closed for trading) -> 18(Not Available for trading)<br>P (pre-close trading)-> 24<br>S (post trading) ->25 | N (not available) -> 2 (Trading Halt)<br>O (open price period) -> 14 (ITS Pre-Opening)<br>T (trading normally)-> 17(Ready Trade)<br>C (closed for trading) -> 18(Not Available for trading)<br>P (pre-close trading)-> 24<br>S (post trading) ->25 |                |
| 6009 | MARKETCODE            | Market code for security   | Market code for security   |                |
| 6010 | INSTRCODE             | Instrument table for security  | - INDS<br>- ORDI<br>- ORDI_PREOPEN<br>- RGHI<br>- WARI<br>- MUTI for mutual fund ETF<br>- ACCEL<br>- WATCHLIST   |                |
| 65   | SymbolSfx             | "0" + Board Code, without space  | "0" + Board Code, without space  |                |
| 6012 | SECTORCODE            | Sector   | Sector   |                |
| 6013 | ORDERMETHODS          | Order method   | Order method   |                |
| 6014 | LOTSIZE               | Size from Lot  | Size from Lot  |                |
| 6015 | MINIMUMSTEP           | N / A  | 0  |                |
| 6018 | FACEVALUE             | FACEVALUE  | FACEVALUE  |                |
| 6019 | FACEUNIT              | FACEUNIT   | FACEUNIT   |                |
| 6020 | EARNINGS              | EARNINGS   | EARNINGS   |                |
| 6021 | PREVIOUSDATE          | PREVIOUSDATE<br>Null when first trading date   | PREVIOUSDATE<br>Null when first trading date   |                |
| 6022 | PREVIOUSPRICE         | PREVIOUSPRICE<br>Null when first trading date  | PREVIOUSPRICE<br>Null when first trading date  |                |

| Tag  | Field Name              | Comments  | Valid Value                           | Type |
|------|-------------------------|---|---------------------------------------|------|
| 6023 | PRICEFORMAT             | <i>PRICEFORMAT</i>  | PRICEFORMAT                           |      |
| 6024 | DECIMALS                | <i>DECIMALS</i>   | DECIMALS                              |      |
| 6025 | QUANTITYLIMIT           | <i>N / A</i>  | 0                                     |      |
| 6028 | VOLTRADED               | <i>N / A</i>  | 0                                     |      |
| 6029 | VALTRADED               | <i>N / A</i>  | 0                                     |      |
| 6030 | YIELD                   | <i>YIELD</i>  | YIELD                                 |      |
| 158  | AccruedInterestRate     | <i>AccruedInterestRate</i>                                      | AccruedInterestRate                   |      |
| 6032 | PRIMARYDIST             | <i>PRIMARYDIST</i>  | PRIMARYDIST                           |      |
| 6033 | FOREIGNLIMIT            | <i>FOREIGNLIMIT</i>   | FOREIGNLIMIT                          |      |
| 6034 | FOREIGNLEVEL            | <i>N / A</i>  | 0                                     |      |
| 6035 | FOREIGNAVAIL            | <i>N / A</i>  | 0                                     |      |
| 6036 | INDEX                   | <i>INDEX</i>  | INDEX                                 |      |
| 6037 | OPENORDERS              | <i>N / A</i>  | 0                                     |      |
| 6038 | LISTEDSIZE              | <i>LISTEDSIZE</i>   | LISTEDSIZE                            |      |
| 6039 | TRADEABLESIZE           | <i>TRADEABLESIZE</i>  | TRADEABLESIZE                         |      |
| 6040 | AVGLAST                 | <i>Average closing price</i>                                    | Average closing price                 |      |
| 6041 | LISTINGDATE             | <i>LISTINGDATE</i>  | LISTINGDATE                           |      |
| 6070 | DELISTINGDATE           | <i>DELISTINGDATE</i><br><i>Applicable for Warrant and Right</i> | DELISTINGDATE                         |      |
| 6048 | COUPONFREQ              | <i>COUPONFREQ</i>   | COUPONFREQ                            |      |
| 6042 | LASTRECORD              | <i>LASTRECORD</i>   | 0 for all record<br>1 for last record |      |
|      | <i>Standard Trailer</i> |   |                                       |      |

See Appendix C

Explanation of OrderMethods (tag 6013):

market (0), --@ Market orders match at the best possible price.  
limit (1), --@ A limit order is placed in a matching queue where it will remain until it is filled or expires according to the specifiedtime. It can be matched at the limit or a better price  
oco (2), --@ The order is part of a one-cancels-the-othergroup  
negdeal (3), --@ A negotiated deal is an order, which is to be matched by a known counter party. Such deals have usually been verbally arranged prior to entry  
cross (4), --@ An order where the buy and sell side are the same firm  
marketmaker (5), --@ Indicates this is an order entered by a Market Maker. Market Makers may enter simultaneous bid and offer prices on certain securities  
NOT USED (6), --@ignore this bit  
orbetter (7), --@ Or Better orders will ignore reasonable price checks  
undisclosed (8), --@ Indicates that the system considers the undisclosed quantity available for matching at all times, unlike the Hidden Order Method, which allows only the visible quantity to be matched  
buyin (9), --@ A special form of order used to take over another trader's position (or part of that position) due to short selling  
yield (10), --@ For fixed interest securities only. Matching occurs when the expected yield for the security matches the specified yield.  
hidden (11), --@ The order quantity that is invisible to the market. Only the visible quantity is available for matching  
stop (12), --@ An order to buy if price rises to the price entered against the order, or sell if price falls to the price specified in the order  
settledate (13), --@ Allows the user to enter a date for settlement that overrides the systems default settlement period. Settlement date is calculated as T+ N days.  
notrdacc (14), --@ Indicates the order does not require a trading account or account type  
fodetails (15), --@ Indicates that clearing details must be entered with the order  
fillallornone (16), --@ The full quantity of the order must be filled before the order will match.  
fillpartmin (17), --@ The specified quantity of the order must be filled before the order will match.  
fillzeromin (18), --@ Any quantity of the order can be filled to match the order.  
public (19), --@ Specify whether user details should be public to the market system when the trader who entered the order logs off or is disconnected from the Trader Workplace. When an order is purged, its status is changed to Withdrawn

cab (20), --@ CAB orders are closing orders for contracts that have no value. These must be entered with a price of 0.01  
 compgenorder (21), --@ Computer generated order  
 goodtilltime (22), --@ The order is valid until a specified time  
 session (23), --@ Order that is valid for the current trading session or for a specified session only  
 day (24), --@ An order which is valid for the full day's trading  
 goodtilldate (25), --@ The order is valid until the specified date  
 goodtillcancelled (26), --@ The order is valid until cancelled by the trader or firm manager  
 immwithdraw (27), --@ The order is either filled as much as possible, or in its entirety upon entering the order book depending on the 'All or None' flag. Otherwise the order is withdrawn completely.  
 tracking (28), --@ order's price tracks another secboard's price  
 manual (29), --@ if set, order trades manually, not automatically  
 automatic (30), --@ if set, order trades automatically  
 efpnegdeal (31), --@ Exchange for Physical type of Neg Deal  
 blknegdeal (32), --@ Block Trade type of Neg Deal  
 NOT USED (33), --@ ignore this bit  
 short (34), --@ if set, orders are short-sell orders

## 12. Trading Limit Subscription (Subscribe or Unsubscribe)

| Tag  | Field Name              | Comments   | Valid Value                        | Type           |
|------|-------------------------|--|------------------------------------|----------------|
|      | <i>Standard Header</i>  | MsgType = U2   |                                    |                |
| 6001 | USERID                  | ID The User logged onto the JATS   | User ID                            | See Appendix C |
| 6050 | REQTYPE                 | Subscription Type :<br>O=Order Subscript<br>T=Trade Subscript<br>N=Neg Subscript<br><b>L=Limit Subscript</b><br>E=Sec Subscript<br>C=Sec Attribute Subscript<br>B= Advertising Subscript | <u>L</u><br><br>Supplied by broker |                |
| 6051 | SEQNUM                  | Sequence Number  | 0                                  |                |
| 76   | ExecBroker              | Used for firm identification in third-party transactions (should not be a substitute for OnBehalfOfCompID/DeliverToCompID).  | Broker ID                          |                |
|      | <i>Standard Trailer</i> |  |                                    |                |

## 13. Trading Limit Message

| Tag  | Field Name             | Comments  | Valid Value            | Type           |
|------|------------------------|---|------------------------|----------------|
|      | <i>Standard Header</i> | MsgType = U6  |                        |                |
| 6051 | SEQNUM                 | Sequence Number   | Sequence Number        | See Appendix C |
| 76   | ExecBroker             | Used for firm identification in third-party transactions (should not be a substitute for OnBehalfOfCompID/DeliverToCompID). | Broker ID              |                |
| 15   | Currency               | Currency Code. Ex: RPH  | Currency Code. Ex: RPH |                |
| 6054 | TAG                    | "KPEI"  | "KPEI"                 |                |
| 6055 | DESCRIPTION            | Description of record   | Description of record  |                |

|      |                  |   |   |                |
|------|------------------|---|---|----------------|
| 6056 | OPENBAL          | Opening cash balance. The first character is either '+' or '-'  | Opening cash balance. The first character is either '+' or '-'  | See Appendix C |
| 6057 | CURRENTPOS       | Current cash position taking into account matched trades and negotiated deals. The first character is either '+' or '-' | Current cash position taking into account matched trades and negotiated deals. The first character is either '+' or '-' |                |
| 6058 | PLANNEDPOS       | Current cash position taking into open order. The first character is either '+' or '-'                                  | Current cash position taking into open order. The first character is either '+' or '-'                                  |                |
| 6059 | LIMIT1           | 0   | 0   |                |
| 6060 | LIMIT1SET        | N   | N   |                |
| 6061 | LIMIT2           | Limit value. It is the maximal value of field PlannedPos  | Limit value. It is the maximal value of field PlannedPos  |                |
| 6062 | LIMIT2SET        | Y   | Y   |                |
|      | Standard Trailer |   |   |                |

#### 14. Security Attribute Subscription (Subscribe or Unsubscribe)

| Tag  | Field Name       | Comments   | Valid Value  | Type           |
|------|------------------|--|--|----------------|
|      | Standard Header  | MsgType = U2   |  |                |
| 6001 | USERID           | ID The User logged onto the JATS   | User ID  | See Appendix C |
| 6050 | REQTYPE          | Subscription Type :<br>O=Order Subscript<br>T=Trade Subscript<br>N=Neg Subscript<br>L=Limit Subscript<br>E=Sec Subscript<br><b>C=Sec Attribute Subscript</b><br>B= Advertising Subscript | C  |                |
| 6051 | SEQNUM           | Sequence Number  | 0  |                |
| 65   | SymbolSfx        | "0" + Board Code<br>ORG (without space).   | "0" + Board Code (RG only)<br>ORG (without space). |                |
| 48   | SecurityID       | Required if REQTYPE = E<br>Required if REQTYPE = B<br>Required if REQTYPE = C  | Security Number                                    |                |
| 6009 | MARKETCODE       | Required if REQTYPE = E<br>Required if REQTYPE = C   | EQ   |                |
|      | BOARD            | Board Id   | Board Id   |                |
|      | Standard Trailer |  |  |                |

#### 15. Security Attribute Message

| Tag  | Field Name      | Comments                                   | Valid Value     | Type           |
|------|-----------------|--|-----------------|----------------|
|      | Standard Header | MsgType = U5<br>( Security_Change_Report ) |                 |                |
| 6051 | SEQNUM          | N[10]                                      | Sequence number | See Appendix C |



|      |                  |                 |   |   |                |
|------|------------------|-----------------|---|---|----------------|
| 6044 | SECINDEX         |                 | N[6]  | Security index  | See Appendix C |
| 48   | SecurityID       |                 | C[12]   | Sec. req  |                |
| 65   | SymbolSfx        |                 | C[3]  | without space   |                |
| 6045 | NoSecCReport     |                 | N[2]  | Number of attribute in this message (N)   |                |
| →    | 6046             | SecCReport Code | Attribute code [1 s/d N]<br>(see attribute table)   | Attribute code [1 s/d N]<br>(see attribute table)   |                |
| →    | 6047             | SecCReport Data | Attribute Data [1 s/d N]<br>(see attribute table).<br><br>Code e attribute (individual index) is N[9]. this format if shown in the application must be change to decimal format (4.5) | Attribute Data [1 s/d N]<br>(see attribute table).<br><br>Code e attribute (individual index) is N[9]. this format if shown in the application must be change to decimal format (4.5) |                |
|      | Standard Trailer |                 |   |   |                |

### Attribute Table

| Attribute Code | Type  | Data                                     |
|----------------|-------|--|
| B              | C[1]  | A (active) or S (suspended)              |
| C              | N[9]  | Best bid                                 |
| D              | N[10] | Bid quantity at best bid price level     |
| G              | N[9]  | Best Offer                               |
| H              | N[10] | Offer quantity at best offer price level |
| K              | N[9]  | Open price for security today            |
| L              | N[9]  | Highest traded price for security today  |
| M              | N[9]  | Lowest traded price for security today   |
| N              | N[9]  | Last traded price for security today     |

## 16. Advertising Subscription (Subscribe or Unsubscribe)

| Tag  | Field Name       | Comments   | Valid Value                        | Type           |
|------|------------------|--|------------------------------------|----------------|
|      | Standard Header  |  | MsgType = U2                       |                |
| 6001 | USERID           | ID The User logged onto the JATS   | User ID                            | See Appendix C |
| 6051 | SEQNUM           | Sequence number  | 0                                  |                |
| 48   | SecurityID       | Required if REQTYPE = E<br>Required if REQTYPE = B<br>Required if REQTYPE = C  | Security number                    |                |
| 6050 | REQTYPE          | Subscription Type :<br>O=Order Subscript<br>T=Trade Subscript<br>N=Neg Subscript<br>L=Limit Subscript<br>E=Sec Subscript<br>C=Sec Attribute Subscript<br><b>B= Advertising Subscript</b> | <u>B</u><br><br>Supplied by broker |                |
| 65   | SymbolSfx        | Boad Code (NG only)  | "0" + "NG"<br>ONG (without space). |                |
|      | Standard Trailer |  |                                    |                |

## 17. Advertising Message

| Tag | Field Name      | Comments  | Valid Value  | Type           |
|-----|-----------------|---|--|----------------|
|     | Standard Header | MsgType = 8<br>(Execution Report)   |  |                |
| 37  | OrderID         | OrderID is required to be unique for each chain of orders.  | Jats Order number  | See Appendix C |
| 11  | ClOrdID         | Required for executions against electronically submitted orders which were assigned an ID by the institution. Not required for orders manually entered by the broker.   | Broker Reference   |                |
| 21  | HandlInst       | Instructions for order handling on Broker trading floor   | =2 for Advertisement   |                |
| 41  | OrigClOrdID     | Conditionally required for response to an electronic Cancel or Cancel/Replace request (ExecType=PendingCancel, Replaced, or Canceled). ClOrdID of the previous order (NOT the initial order of the day) when canceling or replacing an order. | Original JATS number / linked order                                    |                |
| 109 | ClientID        | Used for firm identification in third-party transactions (should not be a substitute for OnBehalfOfCompID/DeliverToCompID).   | User ID  |                |
| 76  | ExecBroker      | Used for firm identification in third-party transactions (should not be a substitute for OnBehalfOfCompID/DeliverToCompID).   | ExecBrokerID   |                |
| 17  | ExecID          | Must be unique for each Execution Report message  | JATS time stamp (hhmmsszzz)<br>Zzz= millisecond                        |                |
| 20  | ExecTransType   | =3 (Status)   | =3 (Status)  |                |
| 150 | ExecType        | Describes the type of execution report. Same possible values as OrdStatus.  | See order request table  |                |
| 39  | OrdStatus       | Describes the current state of a CHAIN of orders, same scope as OrderQty, CumQty, LeavesQty, and AvgPx  | 4 – cancelled order (W)<br>0 – open order (O)<br>5 – amended order (A) |                |
| 1   | Account         | Required for executions against electronically submitted orders which were assigned an account by the institution   | See order request table<br>-will be set to space-                      |                |
| 64  | FutSettDate     | Required when SettlmntTyp = 6 (Future) or SettlmntTyp = 8 (Sellers Option)  | Settledate   |                |
| 55  | Symbol          | Set to single Space   | " "  |                |

| Tag | Field Name       | Comments   | Valid Value   | Type           |
|-----|------------------|--|---|----------------|
| 65  | SymbolSfx        | ORG  | ONG   | See Appendix C |
| 48  | SecurityID       | Sec req  | Sec req   |                |
| 54  | Side             | Side of order  | 1 = Buy<br>2 = Sell   |                |
| 38  | OrderQty         | Either CashOrderQty or OrderQty is required. Not required for a rejected cash order or an order ack for a cash order.  | Order qty<br><br>Order quantity in LOT<br>Advertisement quantity in share |                |
| 40  | OrdType          | 1 – Market Order<br>7 – Limit or Better  | 1 – Market Order or<br>7 – Limit or Better                                |                |
| 44  | Price            | Required if specified on the order   | Price   |                |
| 59  | TimeInForce      | Absence of this field indicates Day order  | 0 – Day order<br>S – Session order<br>7 – Limit Or Better                 |                |
| 432 | ExpireDate       | Conditionally required if TimeInForce = GTD and ExpireTime is not specified.   | Expire Date   |                |
| 18  | ExecInst         | Can contain multiple instructions, space delimited.  |   |                |
| 151 | LeavesQty        | Amount of shares open for further execution. If the OrdStatus is Canceled, DoneForTheDay, Expired, Calculated, or Rejected (in which case the order is no longer active) then LeavesQty could be 0, otherwise LeavesQty = OrderQty - CumQty. |   |                |
| 14  | CumQty           | Currently executed shares for chain of orders.   | 0   |                |
| 6   | AvgPx            | Not Applicable   | 0   |                |
| 75  | TradeDate        | Used when reporting other than current day trades.   | Matching time stamp   |                |
| 60  | TransactTime     | Time the transaction represented by this ExecutionReport occurred  |   |                |
| 58  | Text             |  |   |                |
| 440 | ClearingAccount  |  |   |                |
|     | Standard Trailer |  |   |                |

## 18. News Message

Used to inform news message from exchange.

| Tag | Field Name       | Comments   | Valid Value  | Type           |             |
|-----|------------------|--|--|----------------|-------------|
|     | Standard Header  | MsgType = B  |  |                |             |
| 33  | LinesOfText      | Number of news in this message (N)   | Number of news in this message (N)   | See Appendix C |             |
| →   | 58               | Text   | News title   |                | Free format |
| →   | 354              | EncodedText Len  | Value=8  |                | 8           |
| →   | 355              | EncodedText  | News number  |                | News number |
| 42  | OrigTime         | News release time from JATS  | Datetime   |                |             |
| 148 | Headline         | Consist of 3 fields:<br>1. Type C[3]<br><br>2. Underscore Char[1]<br>3. Symbol | Valid values:<br>1. REP or GEN: REP=Company Reports, GEN=General Announcements.<br>2. Underscore = “_”.<br>3. Symbol = tag 55. |                |             |
|     | Standard Trailer |  |  |                |             |

## 19. Trading Info Reply Message

Used to inform the stock suspend, user suspend, or direct warning from trading administrator to certain trader/all traders.

| Tag | Field Name       | Comments   | Valid Value           | Type           |
|-----|------------------|--|-----------------------|----------------|
|     | Standard Header  | MsgType = h (Trading Info)   |                       |                |
| 336 | TradingSessionID | TradingSessionID   | “JSX”                 | See Appendix C |
| 340 | TradSesStatus    | Halt   | 1                     |                |
| 58  | Text             | Stock suspend or user suspend or direct warning from trading administrator | <trading information> |                |
|     | Standard Trailer |  |                       |                |

## 20. Possible Duplicate Fix Message

Used to inform brokerage firm that there is possible duplicate fix message for previous trader message request.

| Tag  | Field Name      | Comments       | Valid Value  | Type           |
|------|-----------------|----------------|--|----------------|
|      | Standard Header | MsgType = U7   |  |                |
| 6063 | Error Code      | Error Code     | 1  | See Appendix C |
| 6064 | Error Level     | Error Level    | 1  |                |
| 6065 | Ref Error Code  | Ref Error Code | Possible Duplicate/ Resend Message is Rejected + BrokerRef |                |

|      |                         |                      |                          |                |
|------|-------------------------|----------------------|--------------------------|----------------|
| 58   | Error Message           | <i>Error Message</i> | Fix Interpretation Error | See Appendix C |
| 6066 | Previous request        | <i>FIX MsgType</i>   | FIX MsgType              |                |
|      | <i>Standard Trailer</i> |                      |                          |                |

## 21. Unknown JONEC Message

Used to inform broker's application that message which is sent to JONES via JONEC is unknown. Make sure it complies the message rule.

| Tag  | Field Name              | Comments                | Valid Value                           | Type           |
|------|-------------------------|-------------------------|---------------------------------------|----------------|
|      | <i>Standard Header</i>  | MsgType = U7            |                                       |                |
| 6063 | Error Code              | <i>Error Code</i>       | 2                                     | See Appendix C |
| 6064 | Error Level             | <i>Error Level</i>      | 1                                     |                |
| 6065 | Ref Error Code          | Ref Error Code          | Tags value on Fix Message + BorkerRef |                |
| 58   | Error Message           | <i>Unknown FIX Mesg</i> | Unknown FIX Message                   |                |
| 6066 | Previous request        | <i>Null</i>             | Null                                  |                |
|      | <i>Standard Trailer</i> |                         |                                       |                |

## 22. JONEC Message Interpretation Error

Warning for trader that specific message type which already sent to JATS cannot identified tag by tag or some tag didn't follow ORI rules.

| Tag  | Field Name              | Comments  | Valid Value   | Type           |
|------|-------------------------|---|---|----------------|
|      | <i>Standard Header</i>  | MsgType = U7  |   |                |
| 6063 | <i>Error Code</i>       | Error Code  | 3   | See Appendix C |
| 6064 | <i>Error Level</i>      | Error Level   | 1   |                |
| 6065 | Ref Error Code          | "Tag 65 = ORG " = Invalid Board<br>"Tag 48 = YY " = Invalid Security<br>"Error at Tag XX = YY"<br>+ BrokerRef | "Tag 65 = ORG "<br>"Tag 48 = 15000 "<br>"Error at Tag XX = YY"<br>+ BrokerRef |                |
| 58   | Error Message           | FIX Msg Interpretation Error  | "Invalid Board "<br>"Invalid Security "<br>"FIX Msg Interpretation Error "    |                |
| 6066 | <i>Previous request</i> | Previous request  | Null  |                |
|      | <i>Standard Trailer</i> |   |   |                |

## 23. Broadcast Table Full

Warning if JONES cannot receive broadcast message from JATS, because broadcast table is full

| Tag  | Field Name             | Comments          | Valid Value | Type           |
|------|------------------------|-------------------|-------------|----------------|
|      | <i>Standard Header</i> | MsgType = U7      |             |                |
| 6063 | Error Code             | <i>Error Code</i> | 1           | See Appendix C |

|      |                         |                          |                                   |                |
|------|-------------------------|--------------------------|-----------------------------------|----------------|
| 6064 | Error Level             | <i>Error Level</i>       | 1                                 | See Appendix C |
| 6065 | Ref Error Code          | <i>Ref Error Code</i>    | "Broadcast Buffer Full (MARTINS)" |                |
| 58   | Error Message           | <i>Unknown JATS Mesg</i> | Broadcast Buffer Full             |                |
| 6066 | Previous request        | <i>FIX MsgType</i>       | FIX MsgType                       |                |
|      | <i>Standard Trailer</i> |                          |                                   |                |

## 24. JATS Interpretation Error Reply Message

Used to inform the internal error in IDX's Application. JATS's message cannot divide into JONES message standard.

| Tag  | Field Name              | Comments                      | Valid Value   | Type           |
|------|-------------------------|-------------------------------|---|----------------|
|      | <i>Standard Header</i>  | MsgType = U7                  |   |                |
| 6063 | Error Code              | 5 = JATS Interpretation Error | 5   | See Appendix C |
| 6064 | Error Level             | 1 = JATS Interpretation Error | 1   |                |
| 6065 | Ref Error Code          | Ref Error Code                | Broadcast Fix Message + BrokerRef                                     |                |
| 58   | Error Message           | JATS Interpretation Error     | "JATS Interpretation Error "<br>"Cannot send fix BC Message to JONEC" |                |
| 6066 | Previous request        | <i>FIX MsgType</i>            | FIX MsgType   |                |
|      | <i>Standard Trailer</i> |                               |   |                |

## 25. Empty Security List

Message for trader for the last security for specific board.

| Tag  | Field Name              | Comments              | Valid Value            | Type           |
|------|-------------------------|-----------------------|------------------------|----------------|
|      | <i>Standard Header</i>  | MsgType = U7          |                        |                |
| 6063 | Error Code              | <i>Error Code</i>     | 8                      | See Appendix C |
| 6064 | Error Level             | <i>Error Level</i>    | 0                      |                |
| 6065 | Ref Error Code          | <i>Ref Error Code</i> | Board Code + BrokerRef |                |
| 58   | Error Message           | <i>Text</i>           | Empty Security Request |                |
| 6066 | Previous request        | <i>FIX MsgType</i>    | FIX MsgType            |                |
|      | <i>Standard Trailer</i> |                       |                        |                |

## 26. Failed to send Heartbeat to JATS

Warning if JONES cannot send heartbeat to JATS for the user connection..

| Tag  | Field Name             | Comments           | Valid Value | Type           |
|------|------------------------|--------------------|-------------|----------------|
|      | <i>Standard Header</i> | MsgType = U7       |             |                |
| 6063 | Error Code             | <i>Error Code</i>  | 3           | See Appendix C |
| 6064 | Error Level            | <i>Error Level</i> | 1           |                |

|      |                         |                       |   |                |
|------|-------------------------|-----------------------|---|----------------|
| 6065 | Ref Error Code          | <i>Ref Error Code</i> | Error Connection to JATS on User sent Heartbeat to JATS | See Appendix C |
| 58   | Error Message           | <i>Text</i>           | Failed to send JATS                                     |                |
| 6066 | Previous request        | <i>FIX MsgType</i>    | FIX MsgType   |                |
|      | <i>Standard Trailer</i> |                       |   |                |

## 27. Market Info Reply Ok Message

Used to inform that the market information request served

| <i>Tag</i> | <i>Field Name</i>       | <i>Comments</i>       | <i>Valid Value</i>   | <i>Type</i>    |
|------------|-------------------------|-----------------------|--|----------------|
|            | <i>Standard Header</i>  | MsgType = U7          |  |                |
| 6063       | Error Code              | <i>Error Code</i>     | 0  | See Appendix C |
| 6064       | Error Level             | <i>Error Level</i>    | 0  |                |
| 6065       | Ref Error Code          | <i>Ref Error Code</i> | "Tag 65 = " + board<br>"Tag 48 = " + security<br>+ BrokerRef   |                |
| 58         | Error Message           | <i>Explanation</i>    | "Subscription Success"<br>"Subscription Failed"<br>"Unsubscription Success"<br>"Unsubscription Failed" |                |
| 6066       | Previous request        | <i>FIX MsgType</i>    | FIX MsgType  |                |
|            | <i>Standard Trailer</i> |                       |  |                |

## 28. Market Info Reply Bad Message

Used to inform that the market information request cannot be served

| <i>Tag</i> | <i>Field Name</i>       | <i>Comments</i>       | <i>Valid Value</i>  | <i>Type</i>    |
|------------|-------------------------|-----------------------|---|----------------|
|            | <i>Standard Header</i>  | MsgType = U7          |   |                |
| 6063       | Error Code              | <i>Error Code</i>     | 3   | See Appendix C |
| 6064       | Error Level             | <i>Error Level</i>    | 1   |                |
| 6065       | Ref Error Code          | <i>Ref Error Code</i> | Tag XX = YY + BrokerRef   |                |
| 58         | Error Message           | <i>Explanation</i>    | Invalid Subscription :: <reason why the request message cannot be served> |                |
| 6066       | Previous request        | <i>FIX MsgType</i>    | FIX MsgType   |                |
|            | <i>Standard Trailer</i> |                       |   |                |

## V. Message Trailer

Each message is terminated by a standard trailer. The trailer is used to segregate messages and contains the three digit character representation of the Checksum value.

The message trailer format is as follows:

### Message Trailer

| <i>Tag</i> | <i>Field Name</i> | <i>Type</i> | <i>Description</i>   |
|------------|-------------------|-------------|--|
| 10         | Checksum          | Char        | Three byte, simple checksum (see Appendix B for description). ALWAYS THE LAST FIELD IN RECORD; i.e. serves, with the trailing <SOH>, as the end-of-record delimiter. Always defined as three characters. |

Trailer example:  
The characters are:  
'10=212<SOH>'



### Example of Messages

The general format for each message, no matter what the DATA type is, should be like this:

| Header | DATA | Trailer |
|--------|------|---------|
|--------|------|---------|

Please note that each item/field/column in the message is separated by character ASCII <SOH> (001), so the representation of <SOH> in this document, is only for ease of use purpose. Upon implementation, the <SOH> is really a one byte ASCII character.

Here is some examples :

LOGON MESSAGE (see logon request table)

Logon message will consists of header, data, and trailer.

The data part: (please refer to data type, for this example is logon data type)

|                                 |                   |
|---------------------------------|-------------------|
| '98=2<SOH>                      | → encrypt method  |
| 108=45<SOH>                     | → heartbeat       |
| 95=22<SOH>                      | → raw data length |
| 96=MyUserID0001MyPassword<SOH>' | → raw data        |

The trailer string:

|               |                        |
|---------------|------------------------|
| '10=212<SOH>' | → three bytes checksum |
|---------------|------------------------|

The full-length format of the above logon message is:

'[Header]<SOH>98=2<SOH>108=45<SOH>95=22<SOH>96=MyUserID0001MyPassword<SOH>10=212<SOH>'

## FIX Documentations

Since the Financial Information Exchange/FIX was initiated by an organization of institutions and brokers interested in streamlining their trading processes, the specification of FIX protocol messages can be referred at their online resources at:

**<http://www.fixprotocol.org/specification/fix-42.html>**

Some of useful information in it:

- Introduction to FIX
- FIX Message Format
- FIX Field Definitions
- More detailed explanations on FIX Messages
- Business Terms
- Etc.

Appendix C

List Field Type

| <b>Tag</b> | <b>Field Name</b> | <b>Type</b> |
|------------|-------------------|-------------|
| 1          | Account           | C[12]       |
| 6          | AvgPx             | N[16]       |
| 11         | ClOrdID           | C[15]       |
| 14         | CumQty            | N[16]       |
| 15         | Currency          | C[4]        |
| 17         | ExecID            | N[9]        |
| 18         | ExecInst          | C[1]        |
| 20         | ExecTransType     | N[1]        |
| 21         | HandlInst         | N[1]        |
| 31         | LastPx            | N[16]       |
| 33         | LinesOfText       | N[5]        |
| 37         | OrderID           | N[12]       |
| 38         | OrderQty          | N[16]       |
| 39         | OrdStatus         | N[1]        |
| 40         | OrdType           | N[1]        |
| 41         | OrigClOrdID       | C[20]       |
| 42         | OrigTime          | C[17]       |
| 44         | Price             | N[16]       |
| 48         | SecurityID        | C[12]       |
| 54         | Side              | C[1]        |
| 55         | Symbol            | C[21]       |
| 58         | Text              | C[255]      |
| 59         | TimeInForce       | C[1]        |
| 60         | TransactTime      | N[9]        |
| 64         | FutSettDate       | N[8]        |
| 65         | SymbolSfx         | C[3]        |
| 75         | TradeDate         | C[17]       |
| 76         | ExecBroker        | C[12]       |
| 98         | EncryptMethod     | N[1]        |
| 108        | HeartBtInt        | N[3]        |
| 109        | ClientID          | C[12]       |
| 148        | Headline          | C[25]       |

| <b>Tag</b> | <b>Field Name</b>     | <b>Type</b> |
|------------|-----------------------|-------------|
| 150        | ExecType              | N[1]        |
| 151        | LeavesQty             | N[16]       |
| 158        | AccruedInterestRate   | N[16]       |
| 168        | EffectiveTime         | C[17]       |
| 198        | SecondaryOrderID      | N[12]       |
| 326        | SecurityTradingStatus | C[1]        |
| 336        | TradingSessionID      | C[3]        |
| 337        | ContraTrader          | C[12]       |
| 340        | TradSesStatus         | N[1]        |
| 354        | EncodedTextLen        | N[1]        |
| 355        | EncodeText            | N[8]        |
| 375        | ContraBroker          | C[12]       |
| 376        | ComplianceID          | C[15]       |
| 382        | NoContraBrokers       | N[1]        |
| 432        | ExpireDate            | N[8]        |
| 440        | ClearingAccount       | C[10]       |
| 6001       | USERID                | C[12]       |
| 6002       | Current Password      | C[10]       |
| 6003       | New Password          | C[10]       |
| 6004       | Return Value          | C[255]      |
| 6005       | Record Number         | N[8]        |
| 6006       | REMARKS               | C[255]      |
| 6007       | SHORTNAME             | C[21]       |
| 6008       | STATUS                | C[1]        |
| 6009       | MARKETCODE            | C[4]        |
| 6010       | INSTRCODE             | C[12]       |
| 6012       | SECTORCODE            | C[4]        |
| 6013       | ORDERMETHODS          | C[35]       |
| 6014       | LOTSIZE               | N[8]        |
| 6015       | MINIMUMSTEP           | N[9]        |
| 6018       | FACEVALUE             | N[16]       |
| 6019       | FACEUNIT              | C[4]        |

| <b>Tag</b> | <b>Field Name</b> | <b>Type</b> |
|------------|-------------------|-------------|
| 6019       | FACEUNIT          | C[4]        |
| 6020       | EARNINGS          | N[16]       |
| 6021       | PREVIOUSDATE      | N[8]        |
| 6022       | PREVIOUSPRICE     | N[9]        |
| 6023       | PRICEFORMAT       | C[12]       |
| 6024       | DECIMALS          | N[2]        |
| 6025       | QUANTITYLIMIT     | N[10]       |
| 6028       | VOLTRADED         | N[16]       |
| 6029       | VALTRADED         | N[16]       |
| 6030       | YIELD             | N[9]        |
| 6032       | PRIMARYDIST       | C[1]        |
| 6033       | FOREIGNLIMIT      | N[10]       |
| 6034       | FOREIGNLEVEL      | N[16]       |
| 6035       | FOREIGNAVAIL      | N[16]       |
| 6036       | INDEX             | N[9]        |
| 6037       | OPENORDERS        | N[7]        |
| 6038       | LISTEDSIZE        | N[12]       |
| 6039       | TRADEABLESIZE     | N[12]       |
| 6040       | AVGLAST           | N[9]        |
| 6041       | LISTINGDATE       | N[8]        |
| 6042       | LASTRECORD        | C[1]        |
| 6044       | SECINDEX          | N[6]        |
| 6045       | NoSecCReport      | N[2]        |

| <b>Tag</b> | <b>Field Name</b>        | <b>Type</b> |
|------------|--------------------------|-------------|
| 6046       | Attribute code [1 s/d N] | C[1]        |
| 6047       | Atribute Data [1 s/d N]  | C[1]        |
| 6048       | COUPONFREQ               | N[9]        |
| 6050       | REQTYPE                  | C[1]        |
| 6051       | SEQNUM                   | N[10]       |
| 6052       | LAST                     | N[12]       |
| 6054       | TAG                      | C[4]        |
| 6055       | DESCRIPTION              | C[30]       |
| 6056       | OPENBAL                  | N[+/-][16]  |
| 6057       | CURRENTPOS               | N[+/-][16]  |
| 6058       | PLANNEDPOS               | N[+/-][16]  |
| 6059       | LIMIT1                   | N[+/-][16]  |
| 6060       | LIMIT1SET                | C[1]        |
| 6061       | LIMIT2                   | N[+/-][16]  |
| 6062       | LIMIT2SET                | C[1]        |
| 6063       | Error Code               | N[1]        |
| 6064       | Error Level              | N[1]        |
| 6065       | Ref Error Code           | C[255]      |
| 6066       | Previous request         | C[2]        |
| 6070       | DELISTINGDATE            | N[8]        |
| 6071       | REMARKS2                 | C[255]      |
| 6090       | LogonReply               | N[1]        |
| 6091       | LogonDesc                | C[255]      |

- End of Document -